

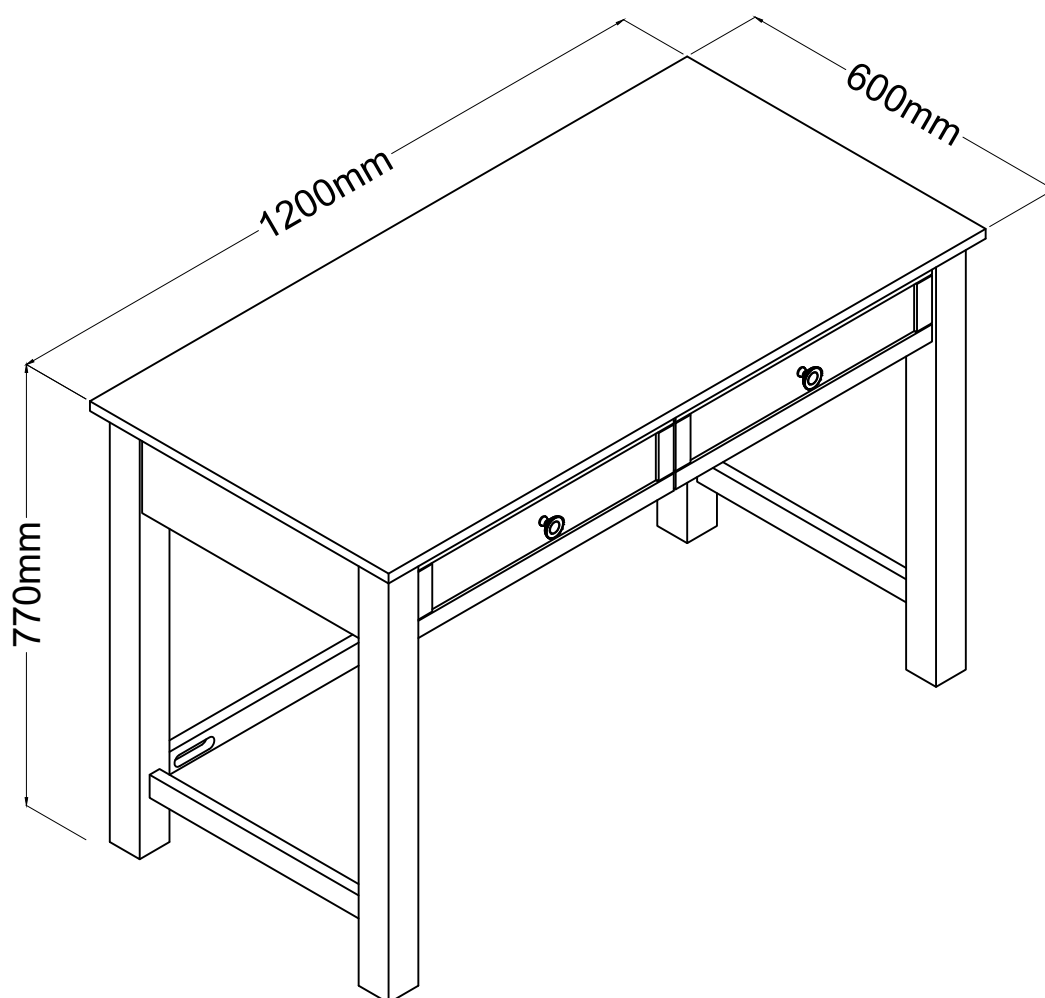


ASSEMBLY INSTRUCTION

RICARDO DESK

ITEM CODE 62499

Imported by Amart Furniture Pty Ltd, Qld, Brisbane Australia.
For any assistance with assembly or for missing parts please phone
Amart Furniture, Customer Service Free call 1800 351 084

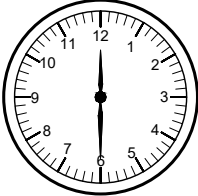




Imported by Amart Furniture Pty Ltd, Qld, Brisbane Australia.
For any assistance with assembly or for missing parts please phone
Amart Furniture, Customer Service Free call 1800 351 084

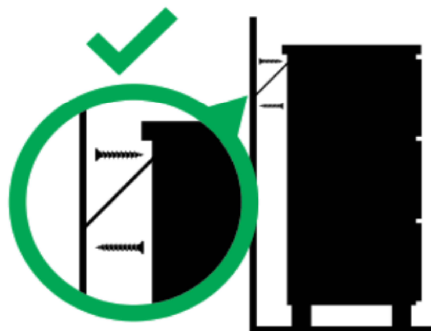
PRE-ASSEMBLY PREPARATION

Before you start:

1. Choose a clean, level, spacious assembly area. Avoid hard surfaces that may damage the product
2. Take care when lifting. Product should be assembled as near as possible to the point of use
3. Ensure that you have all required contents for complete assembly
4. Always read the assembly instructions carefully before beginning assembly.
5. Keep all hardware parts and packaging out of reach of small children.
6. Do not over tighten the screws and bolts as this may damage the threads

	 x2
ALLOW 30 MINUTES	2 PEOPLE REQUIRED
	
ADDITIONAL TOOL REQUIRED (not include)	

WARNING



Children have died from furniture tipover.

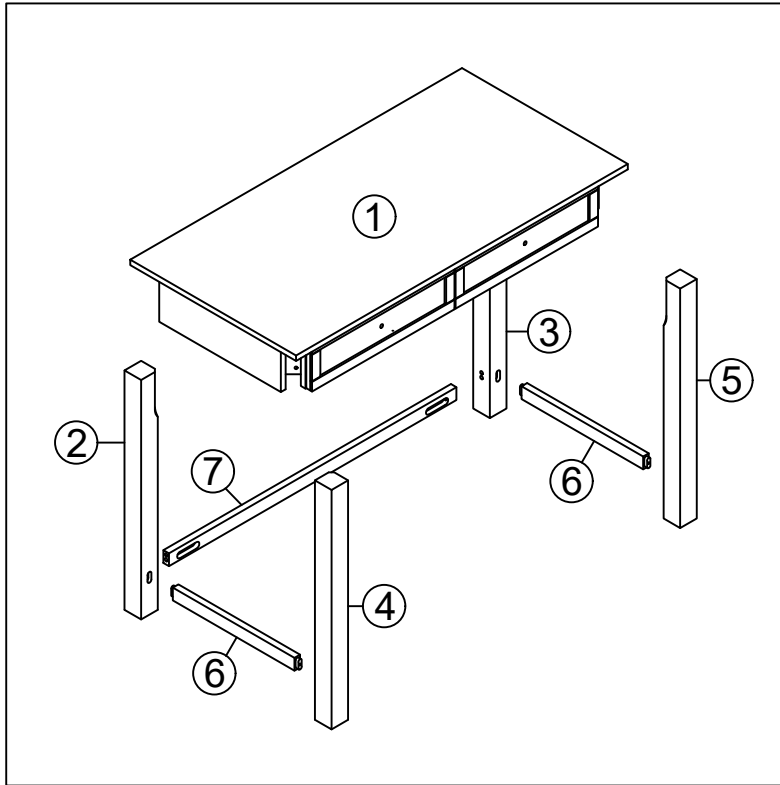
- ALWAYS secure it with an anchor device.
- NEVER allow children to stand, climb or hang on drawers, doors, or shelves.
- NEVER open more than one drawer at a time.
- Place heavy items down low

NEVER put a TV on this furniture

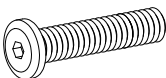
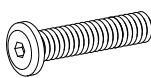

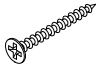
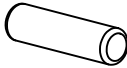




**This is a permanent label.
Do not remove!**

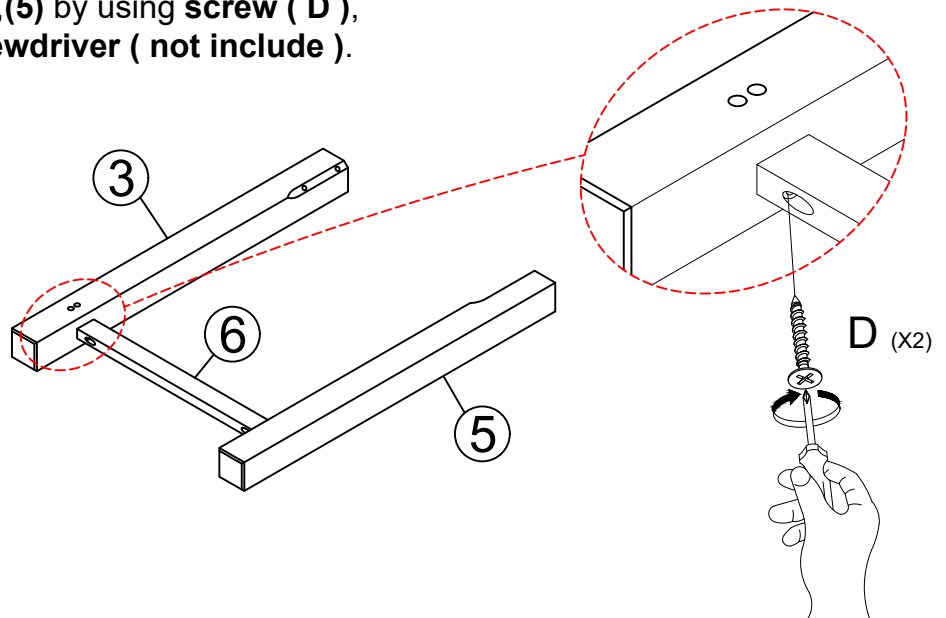
PARTS LIST



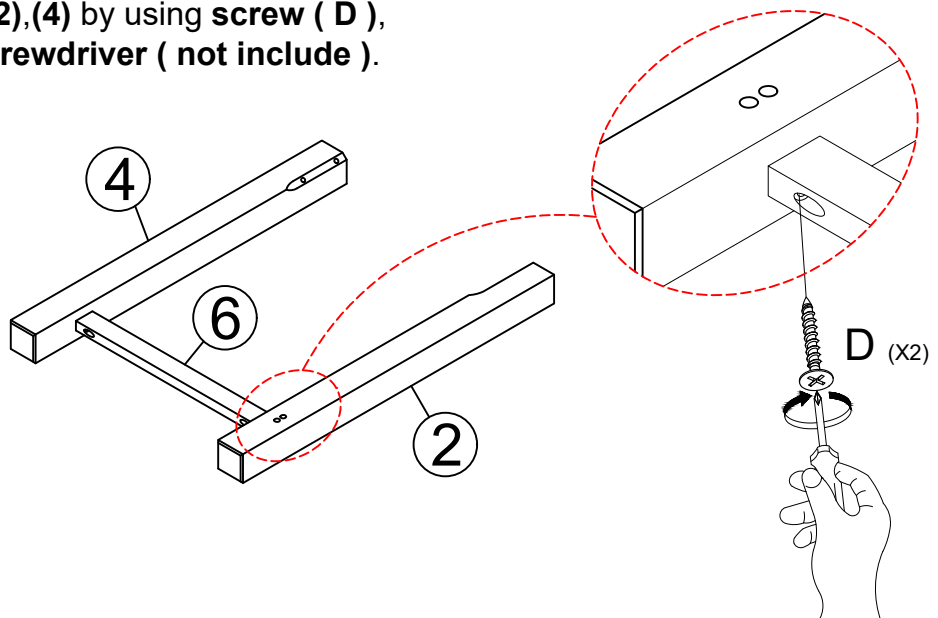
NO	PART LIST	QT'Y
1	TOP FRAME	1 PC
2	BACK LEFT LEG	1 PC
3	BACK RIGHT LEG	1 PC
4	FRONT LEFT LEG	1 PC
5	FRONT RIGHT LEG	1 PC
6	SIDE CROSS BARS	2 PCS
7	BACK CROSS BAR	1 PC

A Bolt  M8 x 50mm 8xA	B Bolt  M6 x 50mm 2xB	C Flat washer  M8 x Ø16 x 1mm 10xC
D Screw  M4 x 50mm 4xD	E Wooden dowel  M8 x 30mm 2xE	F Allen key  4mm 1xF
G Adhesive felt pad  Ø20 x 5mm 4xG		

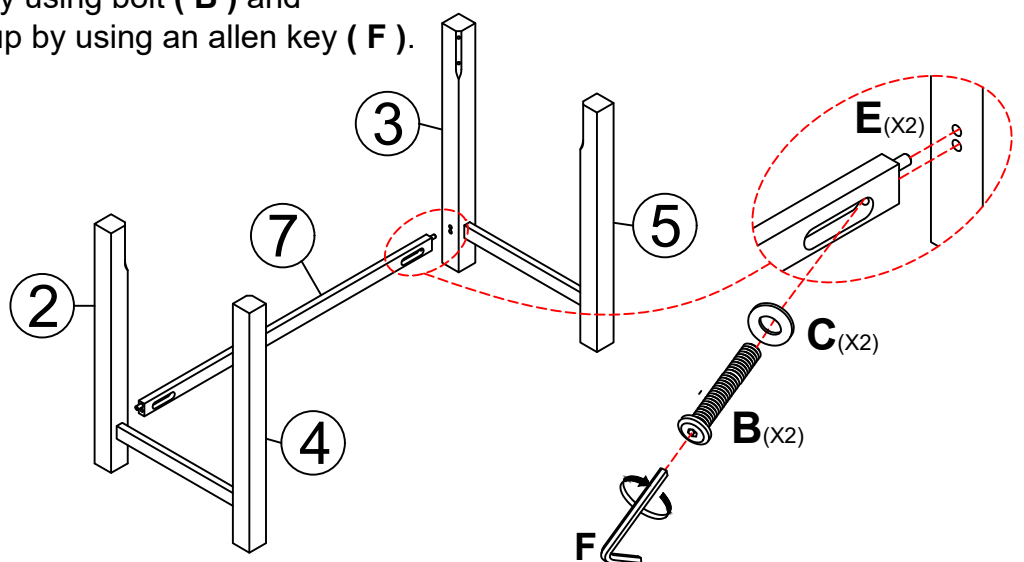
STEP 1: Attach (6) onto (3),(5) by using screw (D),
tighten it up by using an **screwdriver** (not include).



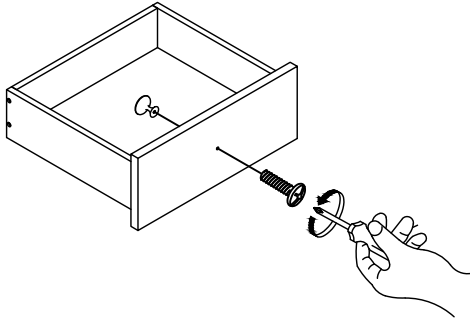
STEP 2: Attach (6) onto (2),(4) by using screw (D),
tighten it up by using an **screwdriver** (not include).



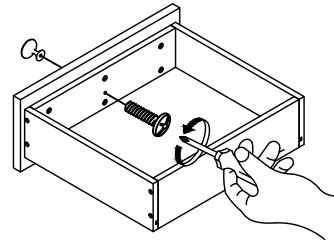
STEP 3: Attach dowels (E) into (7).
Attach (7) onto (2),(3) by using bolt (B) and
flat washer (C), tighten it up by using an allen key (F).



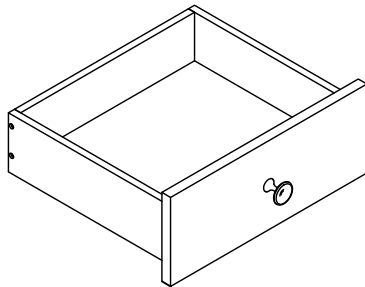
STEP 4: Attach the drawer handle



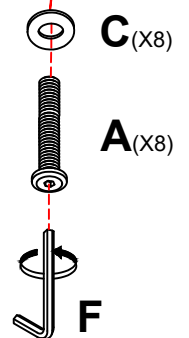
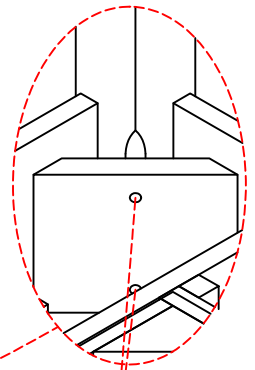
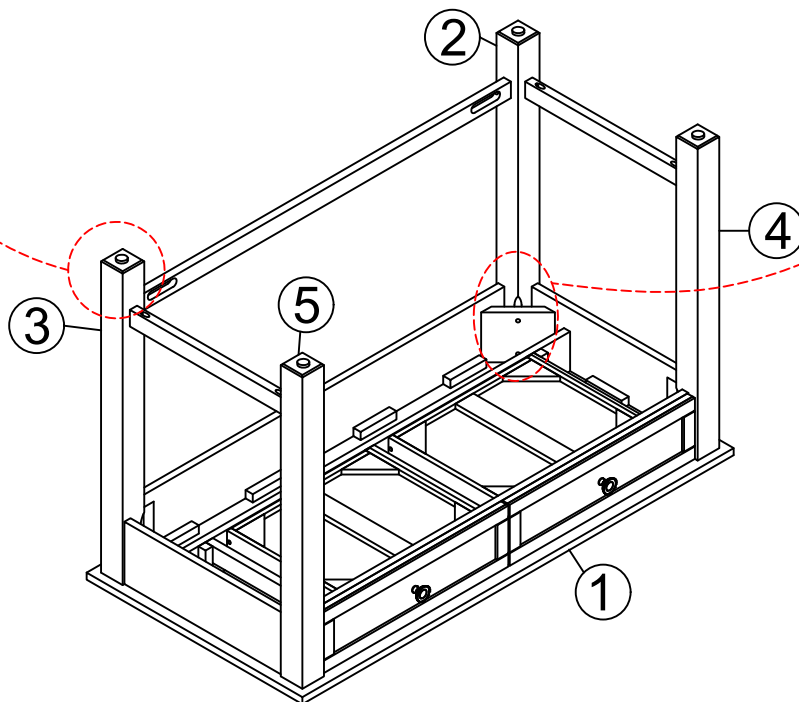
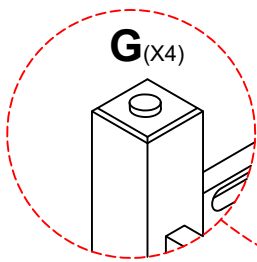
Remove handles from inside drawers using a screwdriver to undo the bolts.



Attach handles to drawer fronts by connecting the handle to the bolt through the pre-drilled hole and tighten with a screwdriver



STEP 5: Attach (2), (3), (4), (5) onto (1) by using bolt (A) and flat washer (C), tighten it up by using an allen key (F). Attach adhesive felt pad (G) onto the legs.

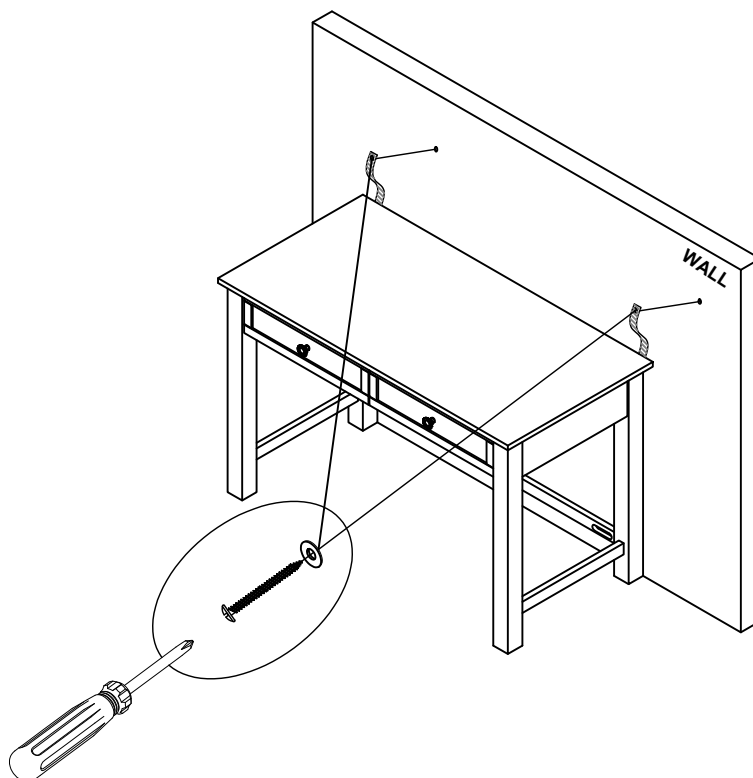


IMPORTANT NOTE:
ALWAYS USE TWO PEOPLE WHEN TURNING THE TABLE OVER.

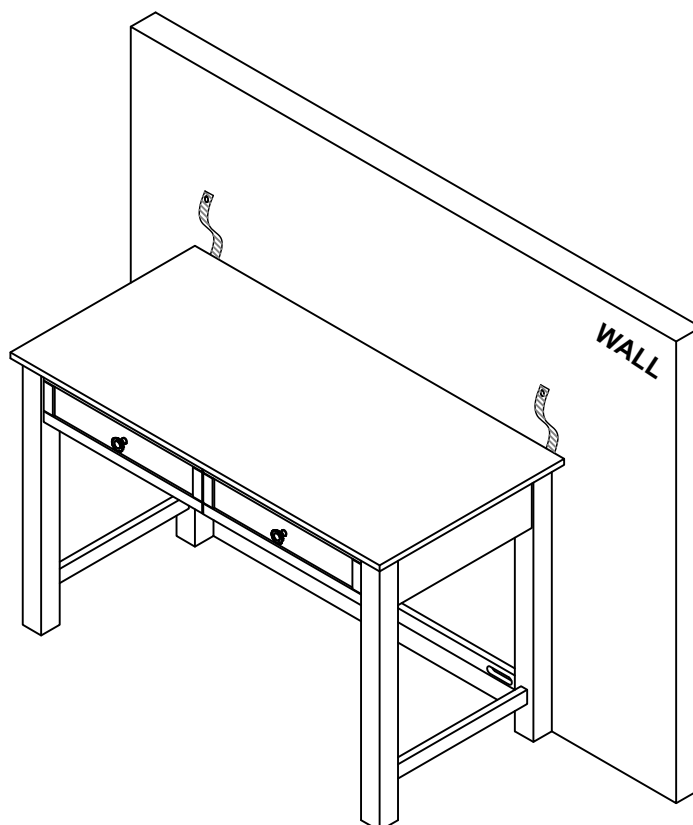
Fixing the strap to the wall

As the wall materials vary, screws for fixing to the wall are not included.

For advice on suitable screws systems, contact your local specialised dealer.



ASSEMBLY IS COMPLETE



CAUTION:

ALWAYS LIFT YOUR PRODUCT WHEN MOVING/RELOCATING. DO NOT DRAG. DRAGGING CAN CAUSE DAMAGE TO THE LEGS

IMPORTANT NOTE:

THE FELT PAD ON THE BOTTOM OF THE CHAIR LEG IS SUBJECT TO WEAR. AMART RECOMMENDS REGULAR ROUTINE CHECKS AND REPLACEMENT WHERE NECESSARY.

IMPORTANT: CARE GUIDE FOR YOUR TIMBER FURNITURE

Congratulations! You have just purchased a quality product from Amart furniture.

Please read on for important information regarding your purchase...

A multi-step finish is applied to all our furniture, but all wood comes from nature. Because of this, there will be natural variations in surface texture and grain like knots, mineral streaks and sap runs that may affect the finish.

These differences in character are not defects, but distinctions that make each piece of furniture unique.

Our furniture is built to last. Following these steps, basic care should protect your investment for years to come.

- Dust frequently with a clean damp lint-free cloth. This will help remove abrasive build up which can damage a finish over time.
- Do not place hot objects on any Furniture surface. Always use a suitable placemat. Laminate and lacquer finishes on table tops provide added scratch and heat resistance to our furniture, but they can still be damaged without proper care.
- Avoid exposing your furniture to strong sunlight, heat, open windows or dampness. Prolonged exposure to direct sunlight can fade the finish of your furniture, and sudden extreme temperature and humidity changes can cause cracking or splitting.
- Do not expose your furniture to any liquids. Never allow water to sit on your furniture. Alcohol, nail polish and perfume are also dangerous as they will dissolve the lacquer finish on contact and may require professional repairs.
- Do not allow plastic to come in direct contact with your furniture. Chemicals in the plastic of placemats etc may soften and mark the finish if left in contact with the furniture for a period of time.

